

# Coronary CTA Scan

Coronary CTA (Computed Tomography Angiography) scan is a non-invasive imaging test that uses X-rays and a contrast dye to visualize the coronary arteries, which supply blood to the heart muscle.

## How it's Performed:

### Preparation:

- Let us know if you are pregnant or currently breastfeeding.
- If you take Viagra, Cialis or similar medications please inform us as you must stop this medication 48 hours prior to your procedure.
- Drink 16 ounces of water before your arrival time.
- DO NOT EAT ANYTHING 4 HOURS PRIOR TO APPOINTMENT TIME.

**IV Line:** An intravenous (IV) line is inserted into an arm for the contrast dye.

**ECG Leads:** Electrocardiogram (ECG) leads are attached to the chest to monitor heart rate during the scan.

**Nitroglycerin:** Nitroglycerin may be administered to dilate the coronary arteries, making them easier to see.

**Metoprolol:** 1-2 doses may be administered to ensure a slower heart rate for optimal images.

**Scan:** The patient lies on a table that slides into the CT scanner.

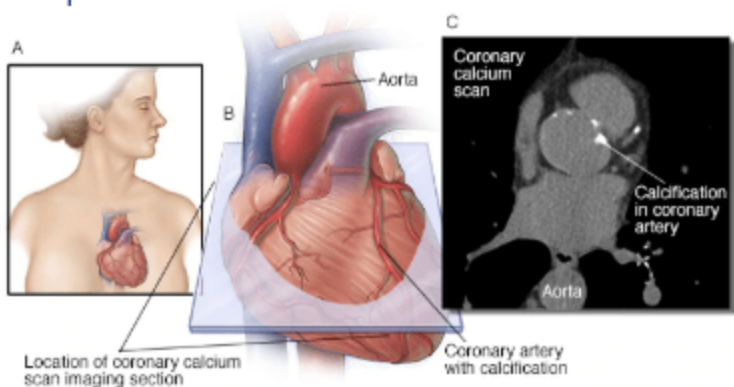
**Breath-holding:** The patient will be asked to hold their breath for short periods during the scan.

**Contrast Injection:** The contrast dye is injected through the IV line while images are being captured.



## How It Works:

The scan involves injecting a contrast dye into a vein, which highlights the coronary arteries on the CT images. The CT scanner rotates around the patient, taking multiple X-ray images that are then compiled into detailed 3D pictures of the heart and its vessels.



## Importance of a Coronary CTA Scan

### **Assess for Coronary Artery Disease (CAD):**

To determine if there's narrowing or blockages in the arteries due to plaque buildup.

**Evaluate Chest Pain:** To help diagnose the cause of chest pain and determine if it's related to heart problems.

**Assess Risk of Heart Attack:** To identify individuals at higher risk of a future heart attack.

**Evaluate Bypass Grafts or Stents:** To assess the condition of previously placed bypass grafts or stents.

**Detect Heart Valve Problems:** In some cases, it can help identify issues with heart valves, such as stenosis or regurgitation.



Heart and Vascular Care  
678-513-2273

Learn More

